

# Computing Resources

Arizona State University  
School of Earth and Space Exploration

Marvin Simkin  
Manager of Information Technology

# Computing Resources

- What is available?
- How can I make the most of these resources?
- How can I avoid losing my work?

# How is ASU Organized?

- University has many Colleges
  - College has many Schools
    - School has many Students

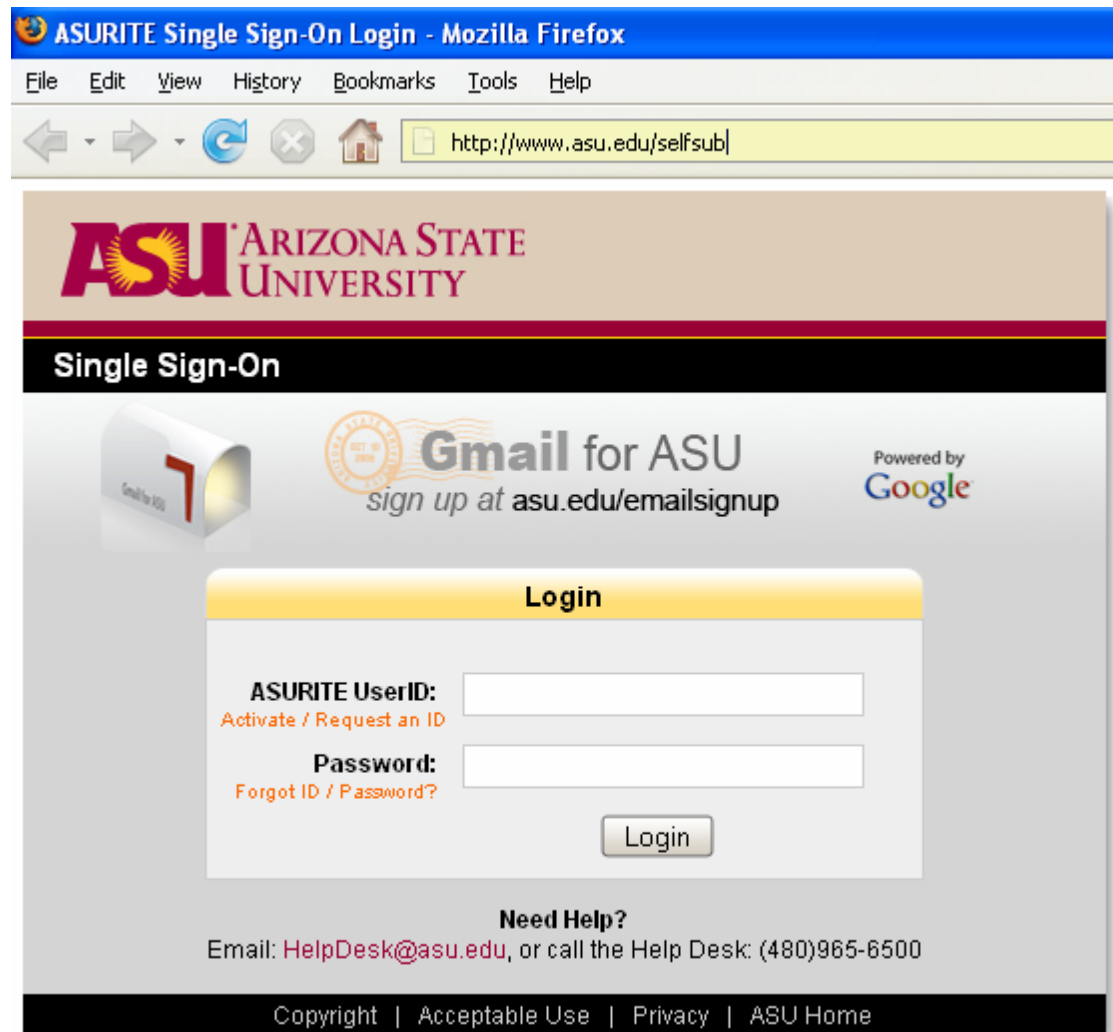
# How is Information Technology at ASU Organized?

- University Technology Office (UTO)
  - ASURITE ID
  - Campus network
  - Web services
  - Email
- In summary, anything someone at other Schools within ASU would also have, UTO provides

# How do I Contact UTO?

- Web
  - <http://www.asu.edu/support>
  - Create a "case"
- Email
  - [HelpDesk@asu.edu](mailto:HelpDesk@asu.edu)
- Phone
  - 480-965-6500

# How do I Contact UTO?



The screenshot shows a Mozilla Firefox browser window with the title "ASURITE Single Sign-On Login - Mozilla Firefox". The address bar displays "http://www.asu.edu/selfsub". The page content includes the ASU logo, the text "Single Sign-On", and a "Gmail for ASU" promotion. The main login area is titled "Login" and contains two input fields: "ASURITE UserID:" with a link "Activate / Request an ID" and "Password:" with a link "Forgot ID / Password?". A "Login" button is positioned below the fields. At the bottom, there is a "Need Help?" section with contact information: "Email: [HelpDesk@asu.edu](mailto:HelpDesk@asu.edu), or call the Help Desk: (480)965-6500". The footer contains links for "Copyright", "Acceptable Use", "Privacy", and "ASU Home".

For information on system outages, visit: <http://systemstatus.asu.edu/>

# How is Information Technology at ASU Organized?

- Technology Support Office (SESE TSO)
  - Servers for the School

# One of Two SESE Server Rooms





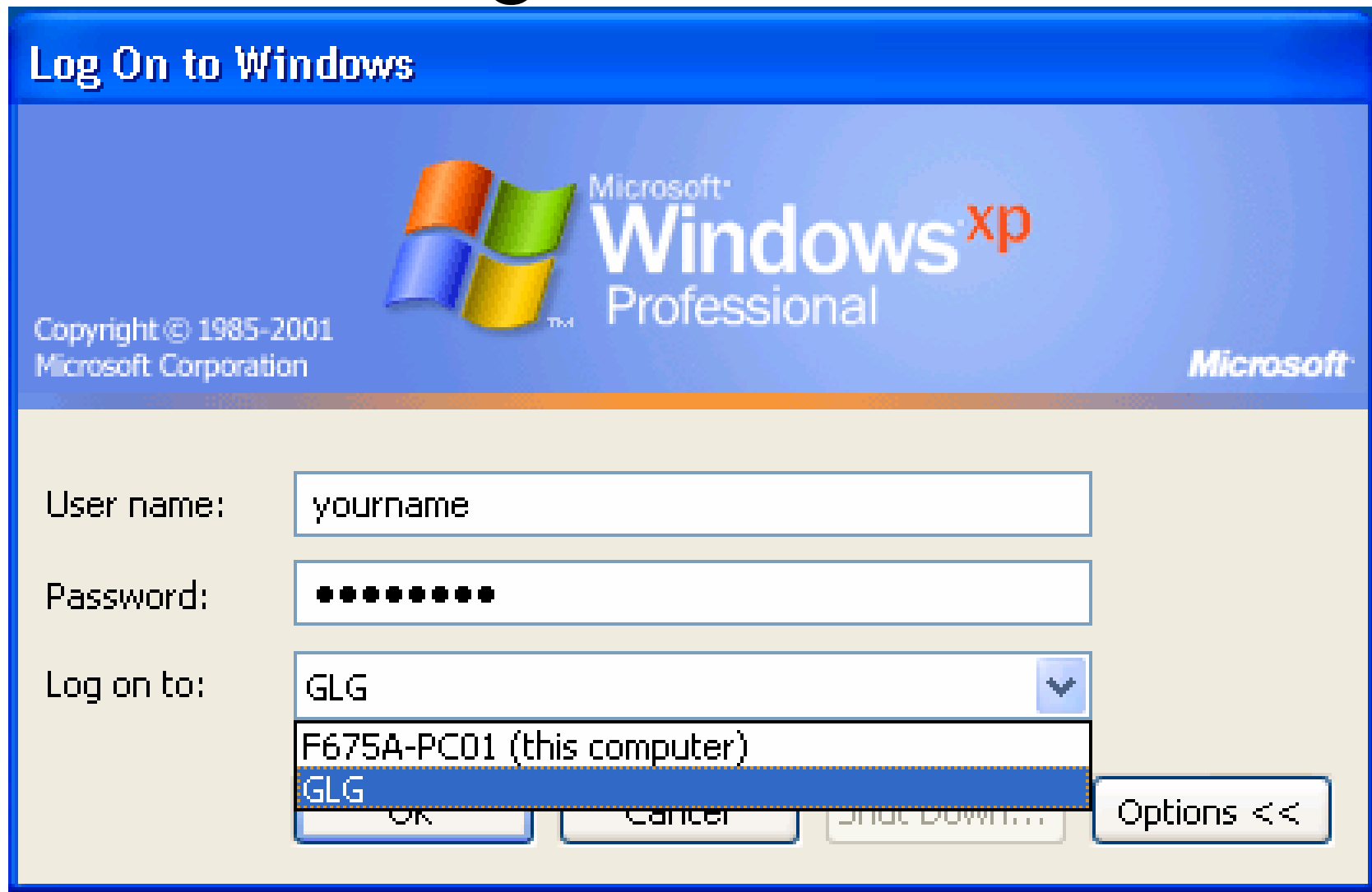
# RAID High-Reliability Storage



# How is Information Technology at ASU Organized?

- Technology Support Office (SESE TSO)
  - Servers for the School
  - "GLG Domain"

# How do I log in to the GLG domain?



When you are done, do not Shut Down, just Log Out

# Computer Classroom PSH461

- 20 Windows XP computers
- Google Earth
  - Earth and Space Exploration
- Celestia
  - Earth and Space Exploration
  - Help, Run Demo
- Cortona VRML viewer
  - 3D data exploration

# Computer Classroom PSH461

- ESRI ArcGIS Mapping software
- MATLAB math and plotting software
- Adobe Creative Suite
- Open Office - <http://openoffice.org>
  - Free software, similar to Microsoft Office
  - Available for Windows, Mac, Linux
  - Can open and save Microsoft formats
  - Save as Microsoft format if sending to someone who does not have Open Office

# What happens when I have problems?

- Is it a University service? Contact UTO.
  - [https://setso.asu.edu/wiki/index.php/How\\_to\\_Contact\\_the\\_University\\_Technology\\_Office](https://setso.asu.edu/wiki/index.php/How_to_Contact_the_University_Technology_Office)
- For School systems, contact SESE TSO:
  - <http://helpdesk.la.asu.edu/>
  - SESE.TSO@asu.edu
  - 480-965-5572
  - PSF675 8:00 AM to 5:00 PM M-F
    - Occasionally closed for meetings etc.

# Machines have names

Include the machine name in your request - we can find it much faster

H461-PC47

f675-pr01

R.S.U PROPERTY CONTROL  
6122977

hp HEWLETT  
PACKARD *LaserJet* 4000 N

1

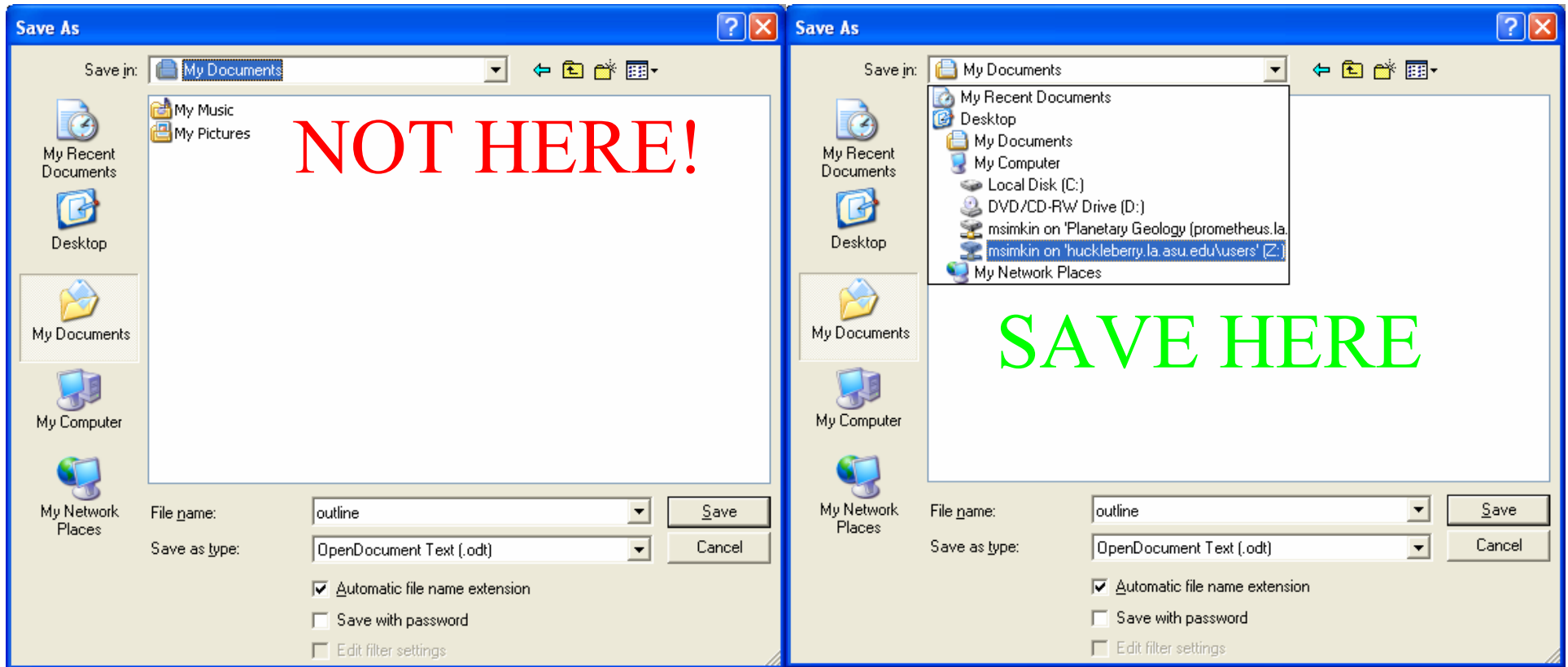
2



# Your Windows “Profile”

- Your profile remembers your settings
- Each computer has a separate profile
  - When you use a computer you did not use before, it will not know you
  - Network is not fast enough, and disk space is not big enough, to copy everyone’s profiles
  - Settings on one computer are not copied to other computers

# Where to Save your Work?



"My Documents" may be deleted without warning!

"Z: Drive" is the RAID High Reliability Storage in the server room.

# Any Machine Can Break

- If you do not want to lose your work, make sure you have multiple copies
- Make sure the copies are not all in one computer

# For More Information

[https://sesetso.asu.edu/wiki/index.php/Introduction\\_to\\_Computing\\_at\\_SESE](https://sesetso.asu.edu/wiki/index.php/Introduction_to_Computing_at_SESE)

- How to Connect to ASU's Wireless Network
- How to Add a Printer
- SESE TSO Recommended Free Software

Questions?